

Big Thompson Elementary School of Nature and STEM
7702 W. Highway 34 Loveland, CO 80537 • 970-613-560 • Bigthompsolementary.org

August 2019

Dear Big T Families,

We hope that you have had an enjoyable summer with your family and friends. Staff have been diligently planning exciting learning adventures for the new 2019-2020 school year!

We are delighted to have some new staff members joining us this year and they are excited to get to know our students and families. Please introduce yourself to them when you see them at school. Join me in welcoming the following staff to Big T:

- Lexi Graff- Kindergarten
- Brian Miller- Counselor
- Lora Patrick- Art (in addition to Susan Hunt)
- Shelly Hines- Music
- Geoff Oveseen- PE (in addition to Lou Nypaver)

Meet and Greet and Back-to School Night will be combined this year. On this night, your students will have a brief opportunity to drop off their supplies in their classrooms at the beginning of the evening. They will then have time with their classroom teacher on the playground to enjoy a cool treat provided by PTA. The format for Back-to-School Night will be different as well. The format will divide the time spent with us into time with your student's classroom teacher as well as time with Brian Miller, our counselor, and myself to learn about social emotional learning and the supports students will have at Big T. The schedule for Back-to-School Night is listed on the "Need to Know Information" page which is a separate attachment.

Our school year begins Monday, August 19th at 8:00a.m.

The "Need to Know Information" listed on a separate page is full of dates, times and procedures that we hope will help answer some of those frequently asked questions as we begin a new school year as well as a map outlining our drop off and pick up procedure. You may also access a copy of the school calendar in the "Quick Links" section of the district website home page, located at www.thompsonschoools.org.

Welcome to new families joining us! We are so glad that you are now a part of the Big T family!

We cannot wait to see you all back at school! We look forward to a great year of learning!

Sincerely,

Sarah Walgast
Principal

Big Thompson Elementary School of Nature and STEM
7702 W. Highway 34 Loveland, CO 80537 • 970-613-560 • Bigthompsolementary.org

2019-2020 “Need to Know” Information for Big Thompson Elementary School of Nature and STEM

School Hours: 8:00 a.m. to 3:10 p.m.

School Phone Number: 613-5600

Attendance Number: 613-5600

Arrival:

- Bus drop off is in the parking lot behind the school in the designated bus lane.
- Car drop off is also in the back beginning at **7:40a.m.** (8:40a.m. on Wednesdays). Please use the bus lane when dropping off your student. See the attached map. **Please do not drop off or pick up your child in the front of the building for safety reasons.**
- Parents may park cars in the front or back parking lots or along Masonville Road (County Road 27) in designated areas and walk children to the playground located in the back of the school.
- Please do not have your child walk through the school or go directly to the classroom as there is not supervision prior to 7:30a.m. (8:30 a.m. on Wednesdays).
- Students may arrive on school grounds **after** 7:40 a.m. (8:40 a.m. on Wednesdays). Children may not arrive without an adult prior to this time as the school has adult supervision **beginning at 7:30 a.m. (8:30 a.m. on Wednesdays).**
- Students may choose to have breakfast with us. The cost of breakfast is \$1.75 and begins at 7:30a.m.
- Children line up by class on the blacktop (in the back of the building) when the morning bell rings to be escorted to their classroom by their teacher.
- The warning bell rings at 7:58a.m. (8:58 a.m. on Wednesdays) and class begins at 8:00a.m. (9:00 a.m. on Wednesdays). Students arriving after 8:00a.m. (9:00a.m. on Wednesdays) will be considered late and need to come to the office for a tardy note. **If your student does arrive after 8:00 (9:00a.m. on Wednesdays), please escort them to the office.**

Lunch/Breakfast:

- Students may bring or buy lunch.
- Single lunches are \$3.00, breakfast is \$1.75 and milk (only) \$0.60. You may put any amount into your child’s lunch/breakfast account. Please make checks payable to: “Nutritional Services” or you can pay online at www.myschoolbucks.com
- Breakfast is offered every morning from 7:40 – 8:00 a.m.
- Menus can be found at www.thompsonsdnutrition.org
- Lunch and lunch recess times are:

Lunch Schedule			Recess Schedule		
11:00-11:20	K	K	11:20-11:35	K	K
11:10-11:30	1	1	11:30-11:45	1	1
11:20-11:40	2	2	11:40-11:55	2	2
11:30-11:50	3	3	11:50-12:05	3	3
11:40-12:00	4	4	12:00-12:15	4	4
11:50-12:10	5	5	12:10-12:25	5	5

Dismissal:

- Classroom teachers accompany all students to the back parking lot for pick-up.
 - Students riding the bus will board their designated bus in the bus lane.
 - Students being picked-up will be picked up in the bus lane after the buses have departed. Please allow 6 minutes for the buses to clear the bus lanes. Parents picking up children should arrive at **3:16p.m.** and pull into the bus lane.
Students will not be released out the front door. If parents choose to park their cars, students will still need to be picked up from their classroom teacher in the back of the building on the blacktop.
- YMCA: (before and after school care) children report to the gym or Art room.

(see next page for upcoming events)

Upcoming Events

Class Lists Posted (on the front door) and Sent via ParentLink- Monday, August 12th at 5:00 p.m.

Back-to-School Night and Meet and Greet

K-1st grades: 8/13 @ 5:30p.m.

2nd-3rd grades: 8/14 @ 5:30p.m.

4th-5th grades: 8/15 @ 5:30p.m.

“BooHoo/WooHoo Tea”-Monday, August 19th from 8:00a.m. to 8:30a.m.

Come meet other parents of the Big T community after you drop off your children on the first day of school. This event is hosted by PTA and will take place on the front lawn.

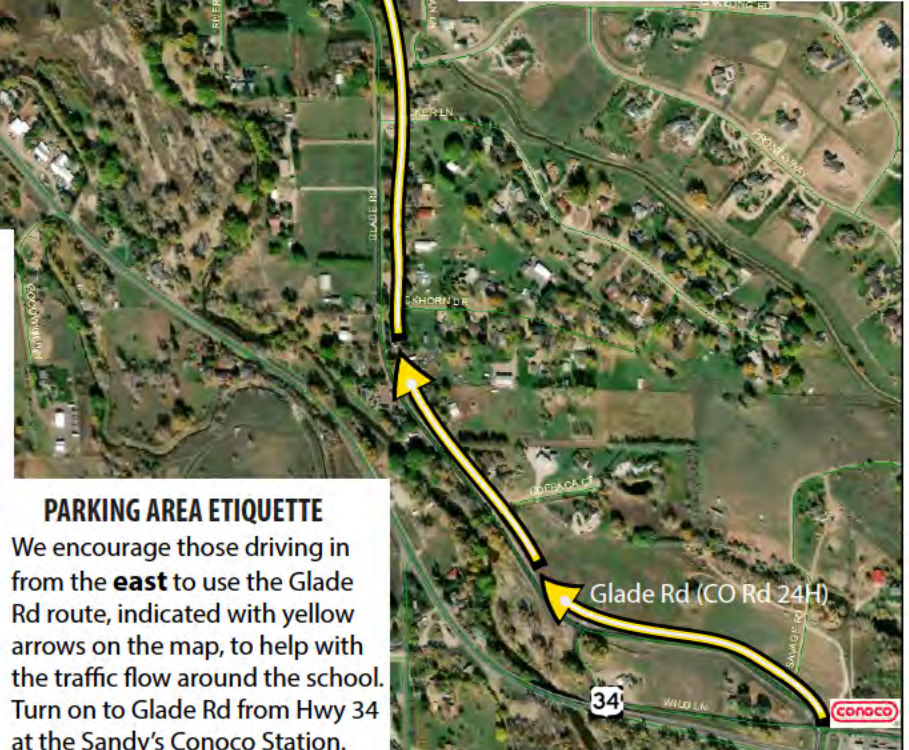
Late Start- Wednesday’s begin, August 21st at 9:00p.m. (and every following Wednesday)



BIG THOMPSON ELEMENTARY HUG & GO



DO NOT PARK ON EISENHOWER BLVD (HWY34) - THIS IS EXTREMELY DANGEROUS!



PARKING AREA ETIQUETTE

We encourage those driving in from the **east** to use the Glade Rd route, indicated with yellow arrows on the map, to help with the traffic flow around the school. Turn on to Glade Rd from Hwy 34 at the Sandy's Conoco Station.

The bus loop will be open for a HUG & GO drop off area once the buses have left. PLEASE do not arrive earlier than the posted drop-off and pick-up times as busses will be in the HUG & GO area. When entering the HUG & GO zone, please pull forward as far as possible to allow for additional cars. Students exit the vehicle next to the sidewalk. Once you have dropped off your child please exit the HUG & GO area quickly making a right turn onto CO Rd 27.

SCHOOL DROP-OFF: M, T, TH, F: 7:40 AM - 8:00 AM
Wed: 8:40 AM - 9:00 AM

SCHOOL PICK-UP: Monday - Friday - 3:16PM

Please use the Parking Lot if you need to enter the school. You do not have to walk your child into the school. Students should enter from the back entrance.

Pick-up and drop-off will not be allowed in the front for safety reasons.



*It is suggested to car pool in order to reduce traffic.
Please see the front office if you would like to be a part of the Big T area CAR POOL!*